



# ALL IN ONE Solar Street Light

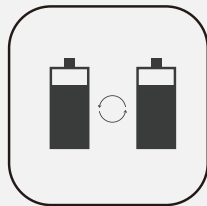
- ▶ LRC-F50
- ▶ LRC-F60



Monocrystalline Solar Module



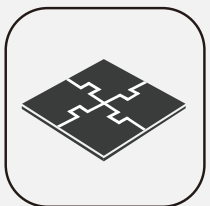
Efficient Controller



Battery system



CREE LED



All-in-One



Anti-Typhoon



PIR motion Sensor

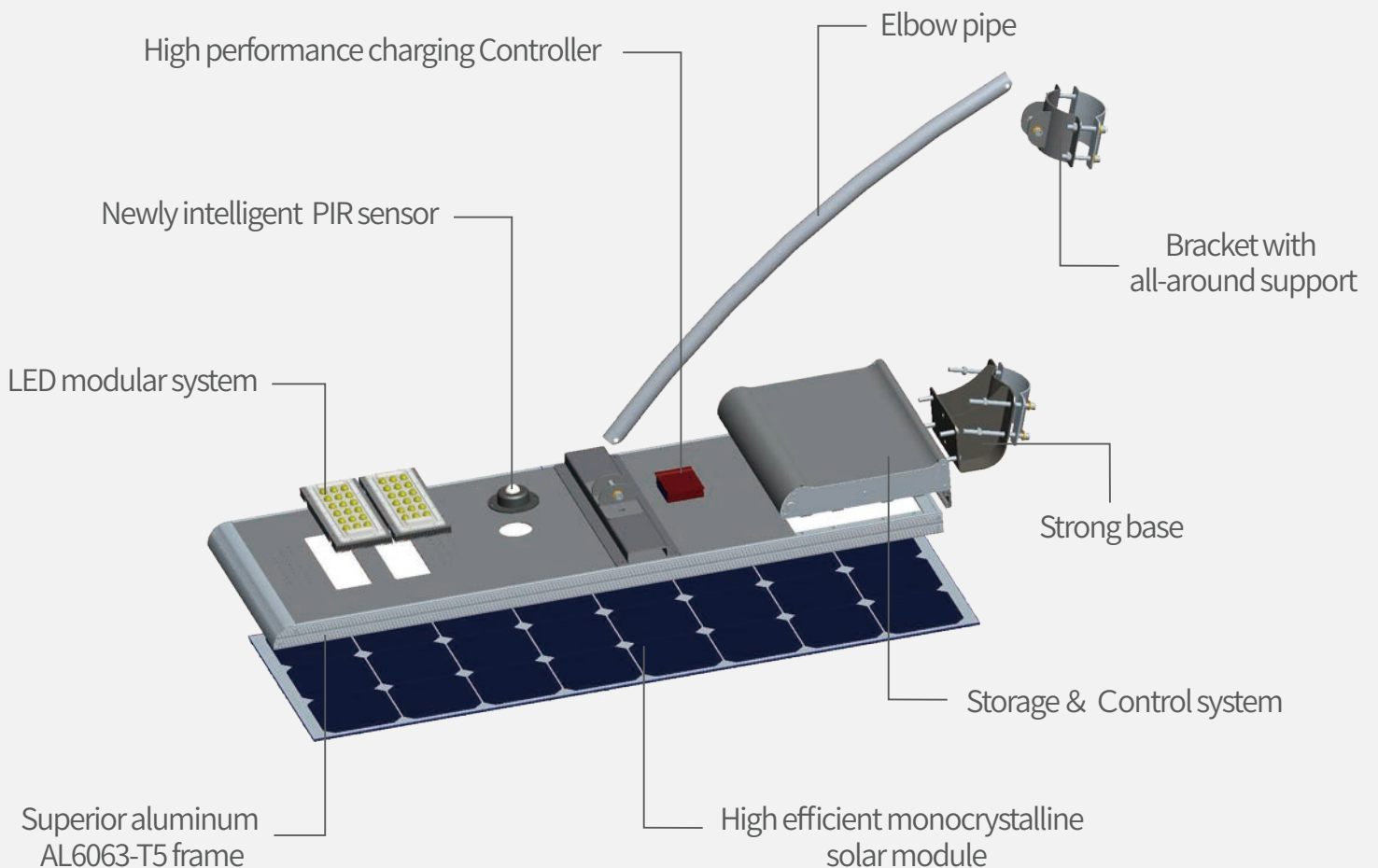


IP65



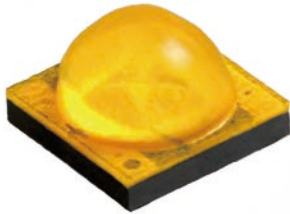
Patent Design, Globe First  
LED Modular Thermal Design  
Innovative Battery Protection System  
High efficiency charging & discharging  
management system, 365 days lighting time

Simple installation, easy maintenance.  
Each part is imaginative,  
all materials are carefully selected.  
Protected against all weathers.



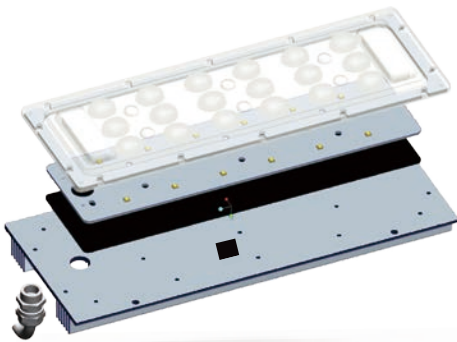
# Our Advantages

## About LED



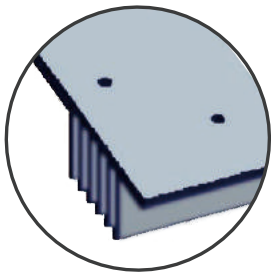
## Cree® XLamp® XT-E LEDs

- ◆ CREE LED without gold wire packaging, creates a first-class light source
- ◆ 140Lm/W, 30% brighter than other similar products
- ◆ Longer working hours, 15% longer than other similar products

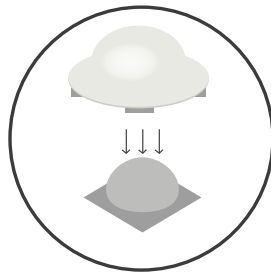


## LED Modular System Design

- ◆ Rectangular beam design for road lighting, with bat wing light distribution
- ◆ The well optimized light distribution, made for a more uniform and wider lighting area.
- ◆ Lens with exhaust valve, prevent water vapor gathered & makes longer lifespan
- ◆ Original thermal system design, innovative heat sink with IP67 PG head



Innovative heat sink



Rectangular beam design

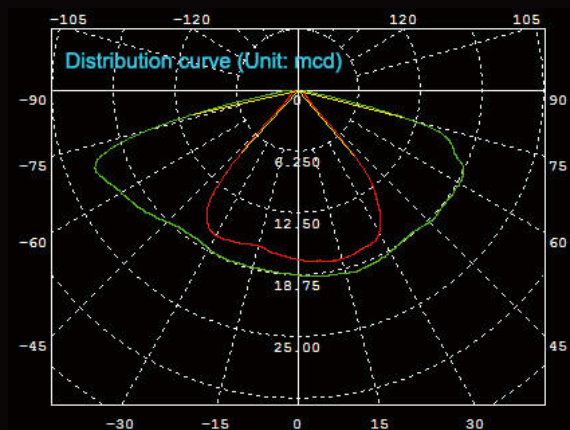


Advanced exhaust valve



IP67 PG head

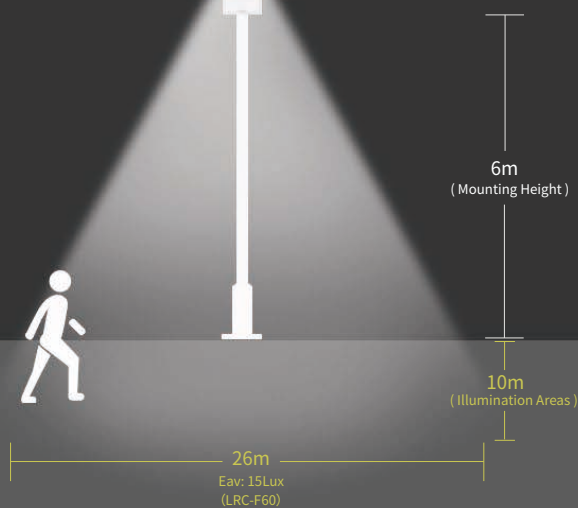
# Bat wing light distribution curve



Dim Mode  
(30%)



Full Bright  
(100%)



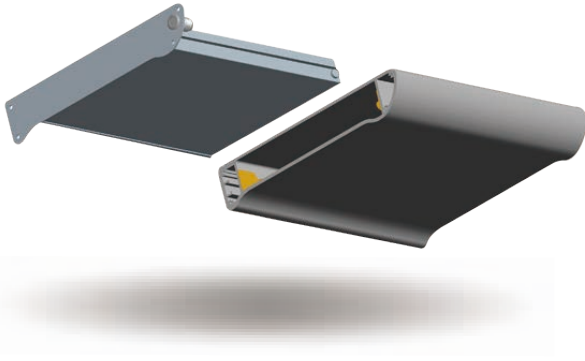
LRC-F series comes complete with built-in PIR sensor system

Regular automatically the light source from 100% full bright (when people move onto the lamp) to 30% dim mode (when people move away) for energy saving

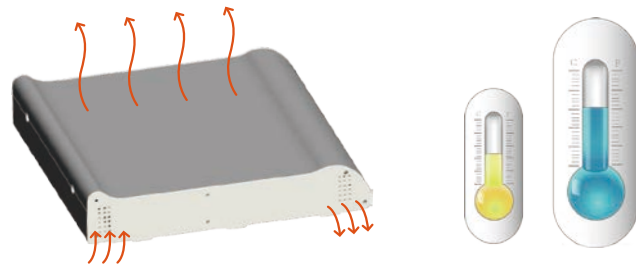
Model No	Lighting Data Table					
LRC-F50	Mounting Height	5M	6M	7M	8M	Recommended Height 6~8M
	Illumination Area	23*10=230 m <sup>2</sup>	25*10=250 m <sup>2</sup>	27*9=243 m <sup>2</sup>	28*10=280 m <sup>2</sup>	
	Eav (lx)	18Lux	12Lux	11Lux	10Lux	
LRC-F60	Mounting Height	5M	6M	7M	8M	Recommended Height 6~8M
	Illumination Area	25*9=225 m <sup>2</sup>	26*10=260 m <sup>2</sup>	28*11=308 m <sup>2</sup>	30*12=360 m <sup>2</sup>	
	Eav (lx)	18Lux	15Lux	12Lux	10Lux	

# Innovative Battery Protection System

- ◆ Built-in Lithium class A battery, single cell with PTC
- ◆ Superior IC with military standards in battery protection board
- ◆ Waterproof, damp proof, explosion proof
- ◆ Over charging & over discharging protection

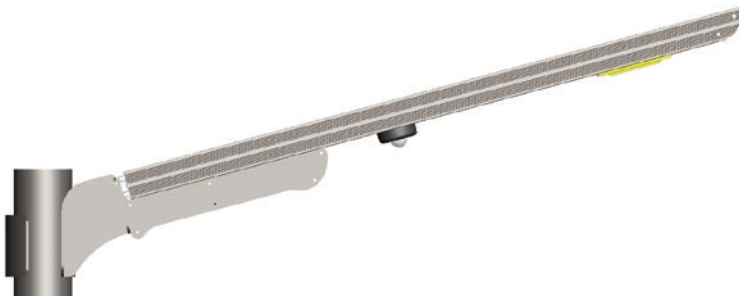


Modular design  
easy installation, free maintenance



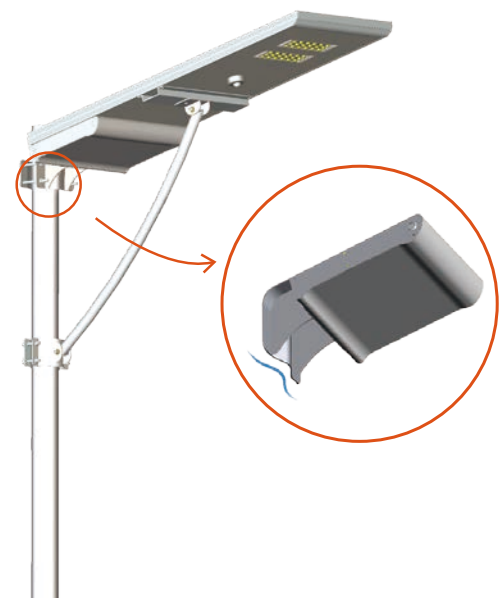
Professional thermal & temperature controller system,  
more air flows and better heat dissipation

## Professional mechanical design



**More beautiful**

Ultra-Thin Design



**Much safer**

Patent hooping design with  
multi-point contact areas, safety  
increased by 30%

# Technical Data

## LRC-F Series All in One Technical Data

\* Packaging of 1 unit per carton

Model No.		LRC-F50	LRC-F60
<b>Physical Parameters</b>			
LED Brand		CREE	CREE
LED Qty		36	36
Power of PV Module (W)		80W	90W
Lithium Battery Capacity (Ah)		35	40
PIR Sensor		√	√
Dimension of Product (mm)		1187*405*36.5	1187*405*36.5
Dimension of Carton (mm)		1250*470*215	1250*470*215
Net Weight (kg)		17.6	20.5
Gross Weight (kg)		18.3	21.3
<b>Light Parameters</b>			
Light Output (W)		50W	60W
Typical Luminous Flux (Lm)		7000	8400
Color Temperature (K)		2700-6500	2700-6500
Beam Angle (°)		150°x70°	150°x70°
Min. Working Time (Hours)	Full Bright	13	13
	Dim Mode	39	39
<b>Environment Parameters</b>			
Charging Temperature (°C)			0 °C to +60 °C
Discharging temperature (°C)			-20 °C to +60 °C
Storage temperature (°C)			-20 °C to +45 °C
<b>Installation</b>			
Recommended Dia. of Top Pole (mm)		76~105	76~105
Recommended Installation Height (m)		6~8	6~8
Recommended Installation Distance (m)		25~30	25~30

להזמנות ופרטים נוספים ניתן לפנות לחברת דרכי האור :

POB 98, Ma'ale Adumim, ISRAEL 9810002

Mobile: 972-50-2500565 | Tel: 972-2-6730822 | Fax: 972-2-6730892

[elikom565@gmail.com](mailto:elikom565@gmail.com)



**WAYS OF LIGHT**

שירותים מקצועיים לענף החשמל והתאורה