



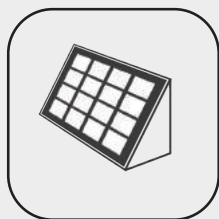
# ALL IN ONE

► LRC20W-001GB

Solar Street Light with Light Box



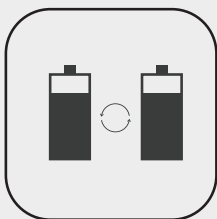
**WAYS OF LIGHT**  
שירותים מקצועיים לענף החשמל והתאורה



Monocrystalline  
Solar Module



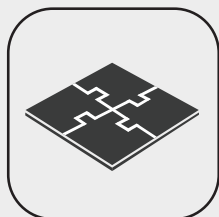
Efficient  
Controller



Battery system



CREE LED



All-in-One



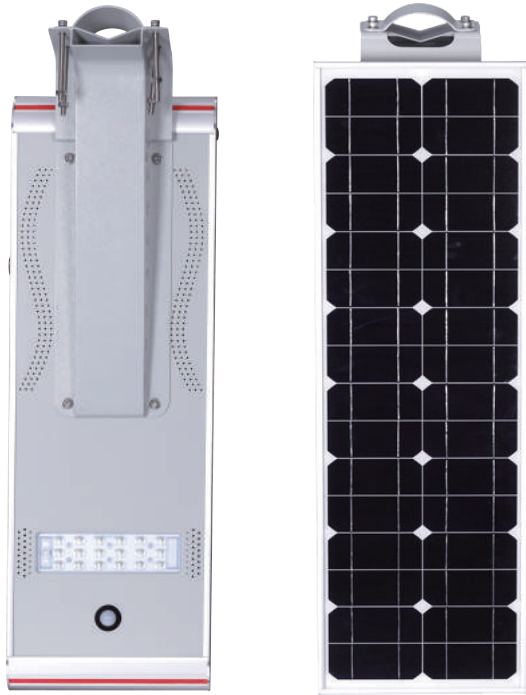
Anti-Typhoon



PIR motion Sensor

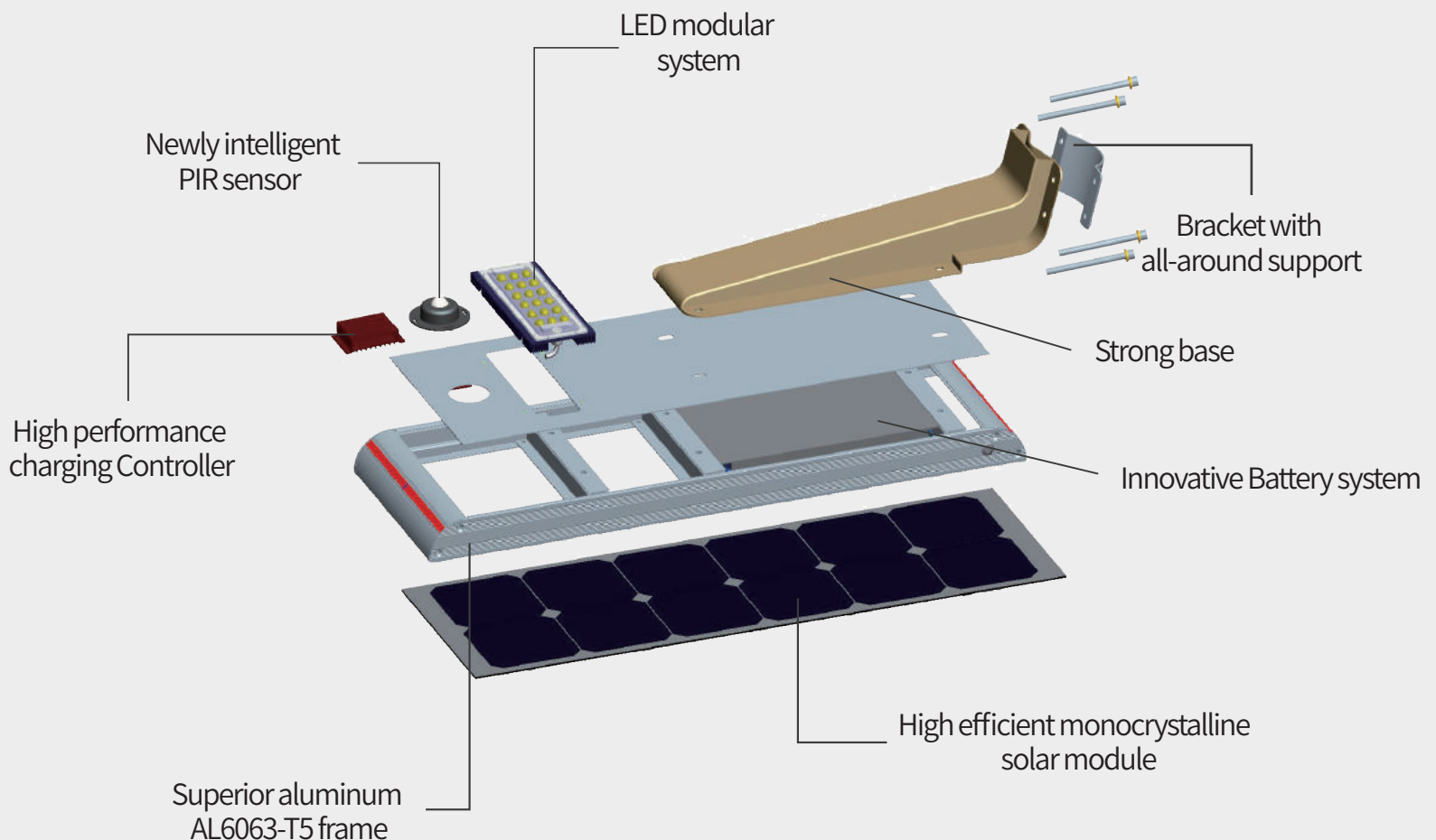


IP65



Patent Design, Globe First  
LED Modular Thermal Design  
Innovative Battery Protection System  
Typhoon Resistant

Simple installation, easy maintenance.  
Each part is imaginative,  
all materials are carefully selected.  
Protected against all weathers.



# LIGHT BOX



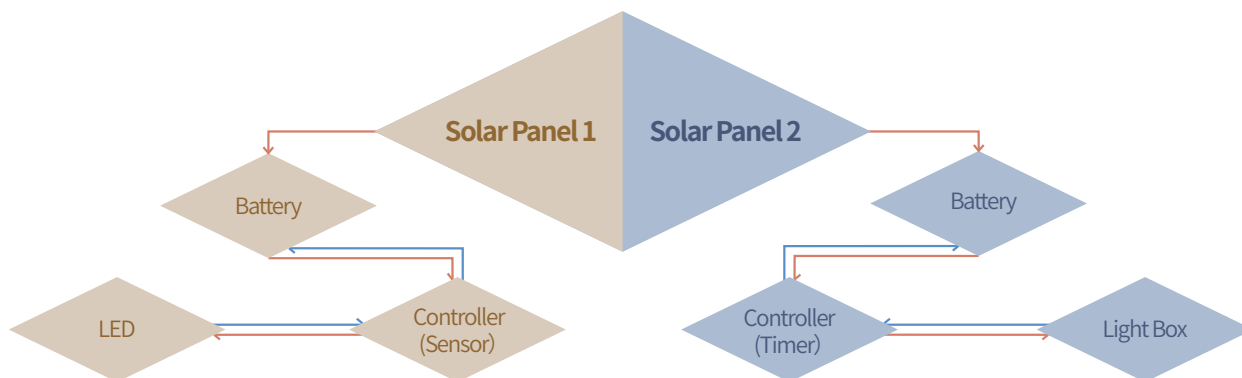
## Ads function

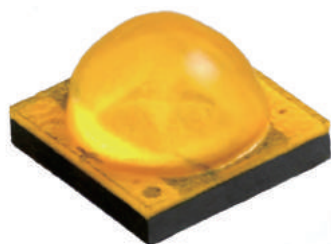
- ◆ High CRI, making vivid and true advertising image.
- ◆ Customized canvas for outdoor use specially, easily replaceable.

Name	AD light box
Max Power	12V 20W
Led Chip Brand	Bridgelux LED
Luminous Flux	2400Lm(TYP)
Lifespan	50,000hrs
Resolution	1600*1200
Color Temperature	6500-7000K
Light box size	900*600*120mm
Working time	4-6 hours
Mounting Height	2.5-3m
AD Canvas	Imported canvas (customized)

## Our Advantages

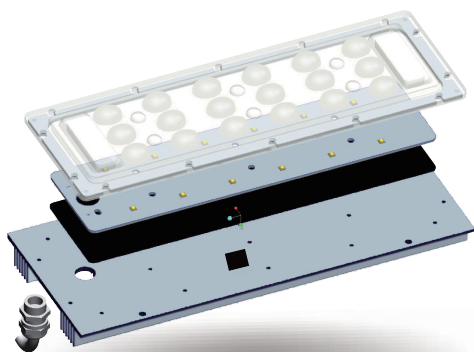
### Dual-system Protection Design





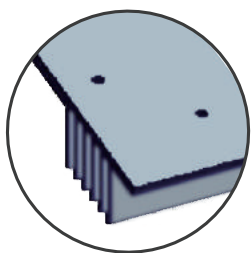
## Cree® XLamp® XT-E LEDs

- ◆ CREE LED without gold wire packaging, creates a first-class light source
- ◆ 140Lm/W, 30% brighter than other similar products
- ◆ Longer working hours, 15% longer than other similar products

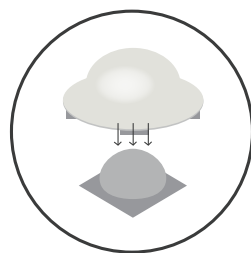


## LED Modular System Design

- ◆ Rectangular beam design for road lighting, with bat wing light distribution
- ◆ The well optimized light distribution, makes for a more uniform and wider lighting area.
- ◆ Lens with exhaust valve, prevent water vapor gathered & makes longer lifespan
- ◆ Original thermal system design, innovative heat sink with IP67 PG head



Innovative heat sink



Rectangular beam design

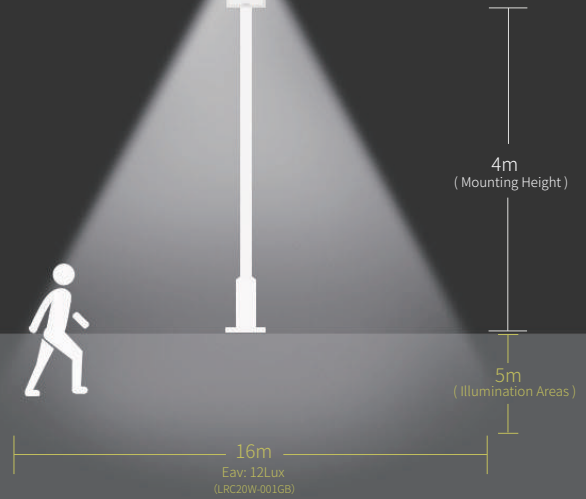
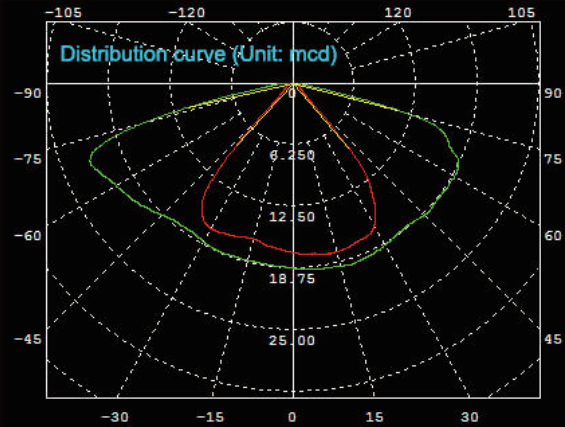


Advanced exhaust valve



IP67 PG head

# Bat wing light distribution curve

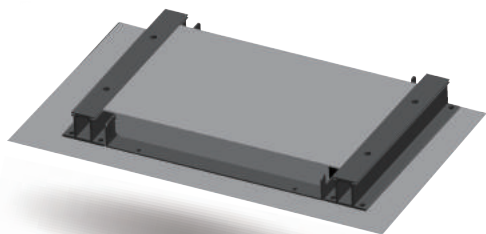


## Remote monitoring series comes complete with built-in PIR sensor system

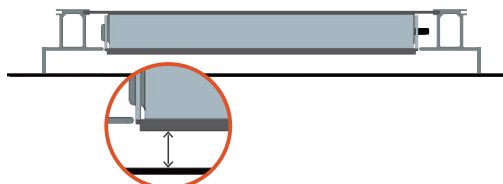
Regular automatically the light source from 100% full bright (when people move onto the lamp) to 30% dim mode (when people move away) for energy saving

Model No.		Lighting Data Table				
LRC20W-001GB	Mounting Height	3M	4M	5M	6M	Recommended Height
	Illumination Area	15.5*4.5=70 m²	16*5=80 m²	17*5.5=93.5 m²	18*6=108 m²	4~6M
	Eav (lx)	14Lux	12Lux	11Lux	9Lux	

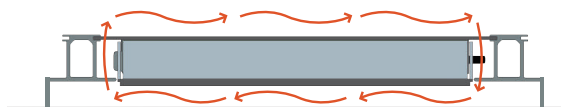
## Innovative Battery Protection System



- ◆ Built-in LiFePO4 class A battery, single cell with PTC
- ◆ Superior IC with military standards in battery protection board
- ◆ Waterproof, damp proof, explosion proof
- ◆ Over charging & over discharging protection

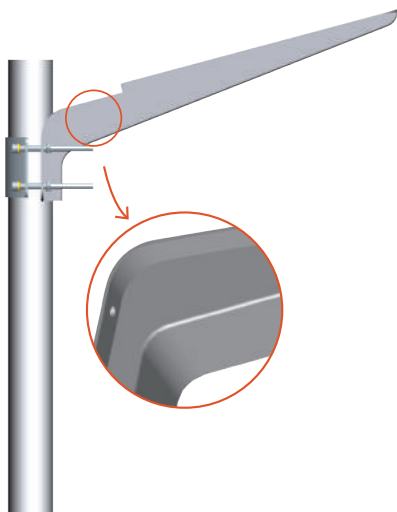


Original separate design with 5mm gap between battery and solar panel



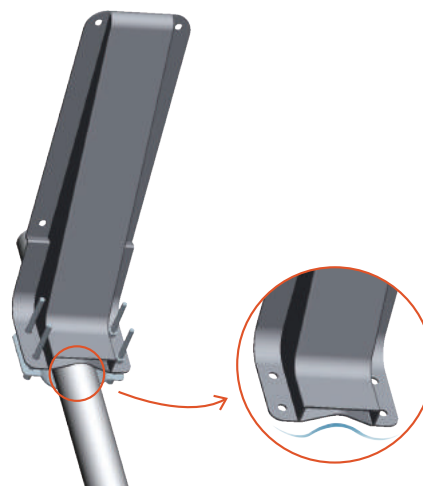
Air convection & thermal system design  
More air flows and better heat dissipation

## Anti-Typhoon design



**Much Stronger**

Sectional area is 50% larger than others for thicker materials



**Much safer**

Patent hooping design with multi-point contact areas, safety increased by 30%

# Technical Data

## LRC Series All in One Technical Data

\* Packaging of 1 unit per carton

Model No.		LRC20W-001GB
Physical Parameters		
LED Brand		CREE
LED Qty		18
Power of PV Module (W)		80W
LIFEPO4 Battery Capacity (Ah)		33
PIR Sensor		✓
Dimension of Product (mm)		1155*405*56mm
Net Weight (kg)		13
Dimension of Carton (mm)		1230*480*260mm
Gross Weight (kg)		21.5
Light Parameters		
Light Output (W)		20W
Typical Luminous Flux (Lm)		2800
Color Temperature (K)		2700-6500
Beam Angle (°)		150°x70°
Min. Working Time (Hours)	Full Bright	13
	Dim Mode	39
Environment Parameters		
Charging Temperature (°C)		0 °C to +60 °C
Discharging temperature (°C)		-20 °C to +60 °C
Storage temperature (°C)		-20 °C to +45 °C
Installation		
Recommended Dia. of Top Pole (mm)		60~105
Recommended Installation Height (m)		4~6
Recommended Installation Distance (m)		18~20



להזמנות ופרטים נוספים ניתן לפנות לחברת דרכי האור :

POB 98, Ma'ale Adumim, ISRAEL 9810002

Mobile: 972-50-2500565 | Tel: 972-2-6730822 | Fax: 972-2-6730892

[elikom565@gmail.com](mailto:elikom565@gmail.com)



**WAYS OF LIGHT**

שירותים מקצועיים לענף החשמל והתאורה