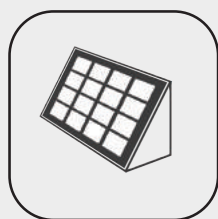




ALL IN ONE

Solar Street Light

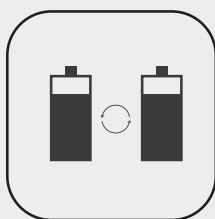
- LRC25W
- LRC30W
- LRC40W



Monocrystalline
Solar Module



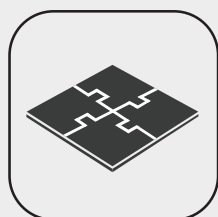
Efficient
Controller



Battery
system



CREE LED



All-in-One



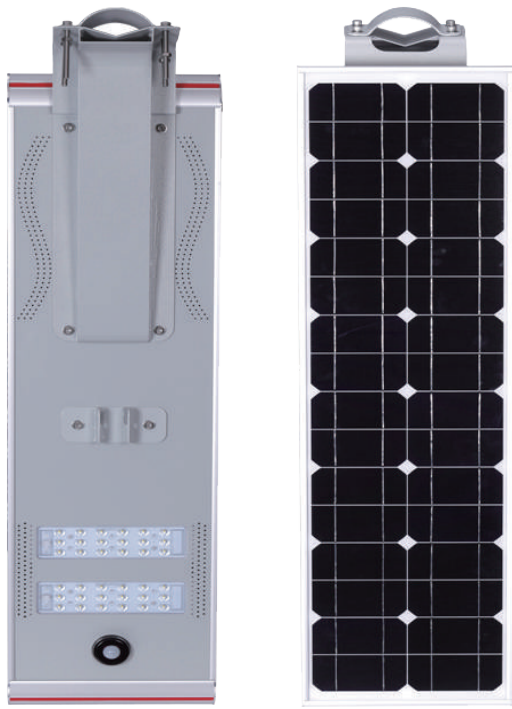
Anti-Typhoon



PIR motion Sensor

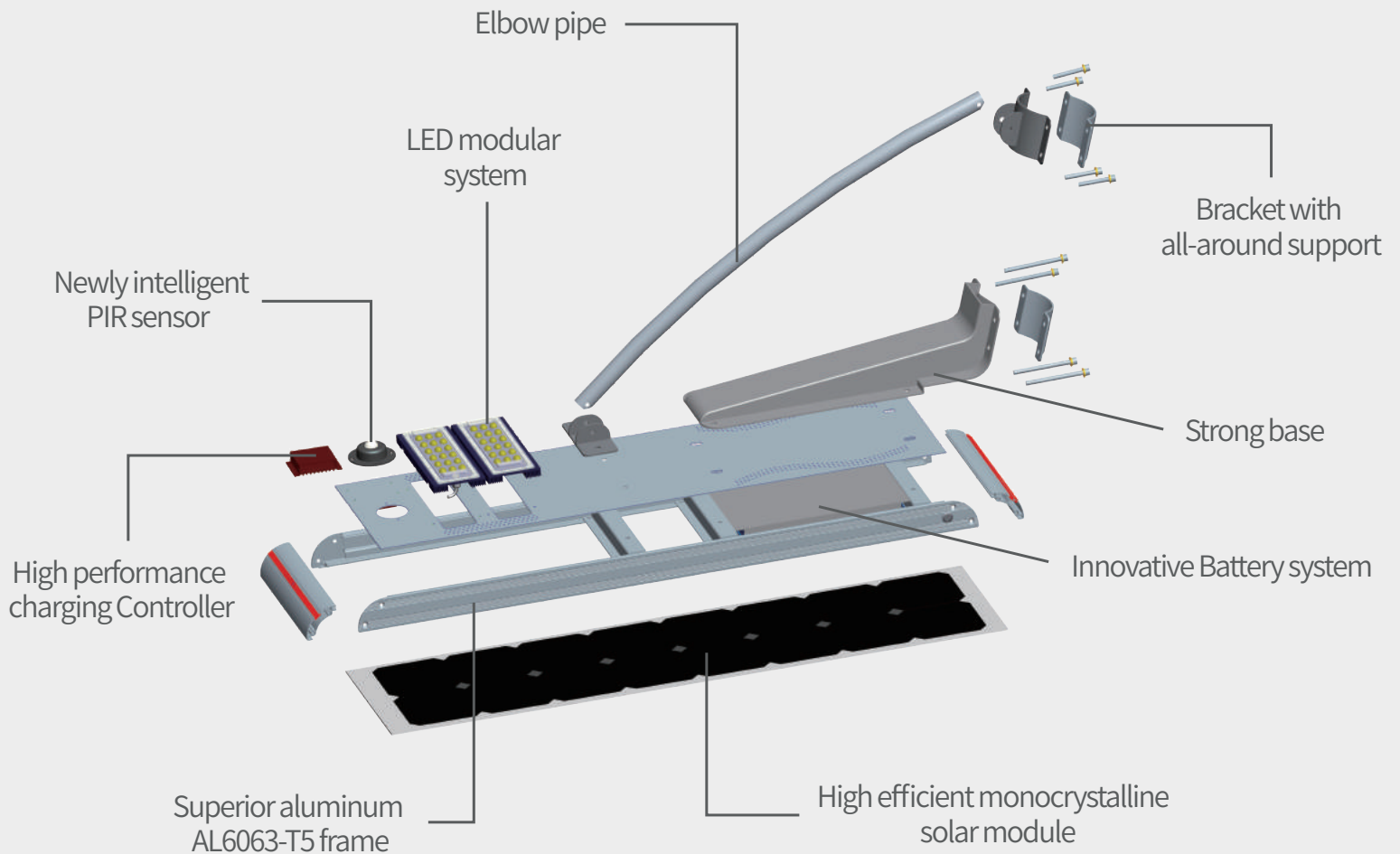


IP65



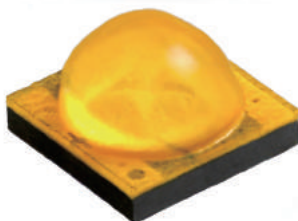
Patent Design, Globe First
LED Modular Thermal Design
Innovative Battery Protection System
Typhoon Resistant

Simple installation, easy maintenance.
Each part is imaginative,
all materials are carefully selected.
Protected against all weathers.



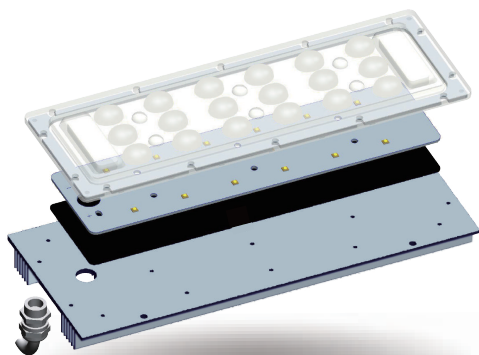
Our Advantages

About LED



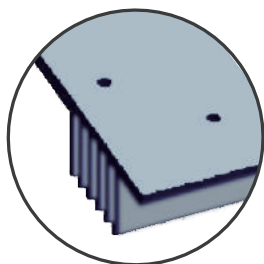
Cree® XLamp® XT-E LEDs

- ◆ CREE LED without gold wire packaging, creates a first-class light source
- ◆ 140Lm/W, 30% brighter than other similar products
- ◆ Longer working hours, 15% longer than other similar products

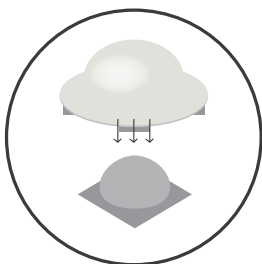


LED Modular System Design

- ◆ Rectangular beam design for road lighting, with bat wing light distribution
- ◆ The well optimized light distribution, makes for a more uniform and wider lighting area.
- ◆ Lens with exhaust valve, prevent water vapor gathered & makes longer lifespan
- ◆ Original thermal system design, innovative heat sink with IP67 PG head



Innovative heat sink



Rectangular beam design

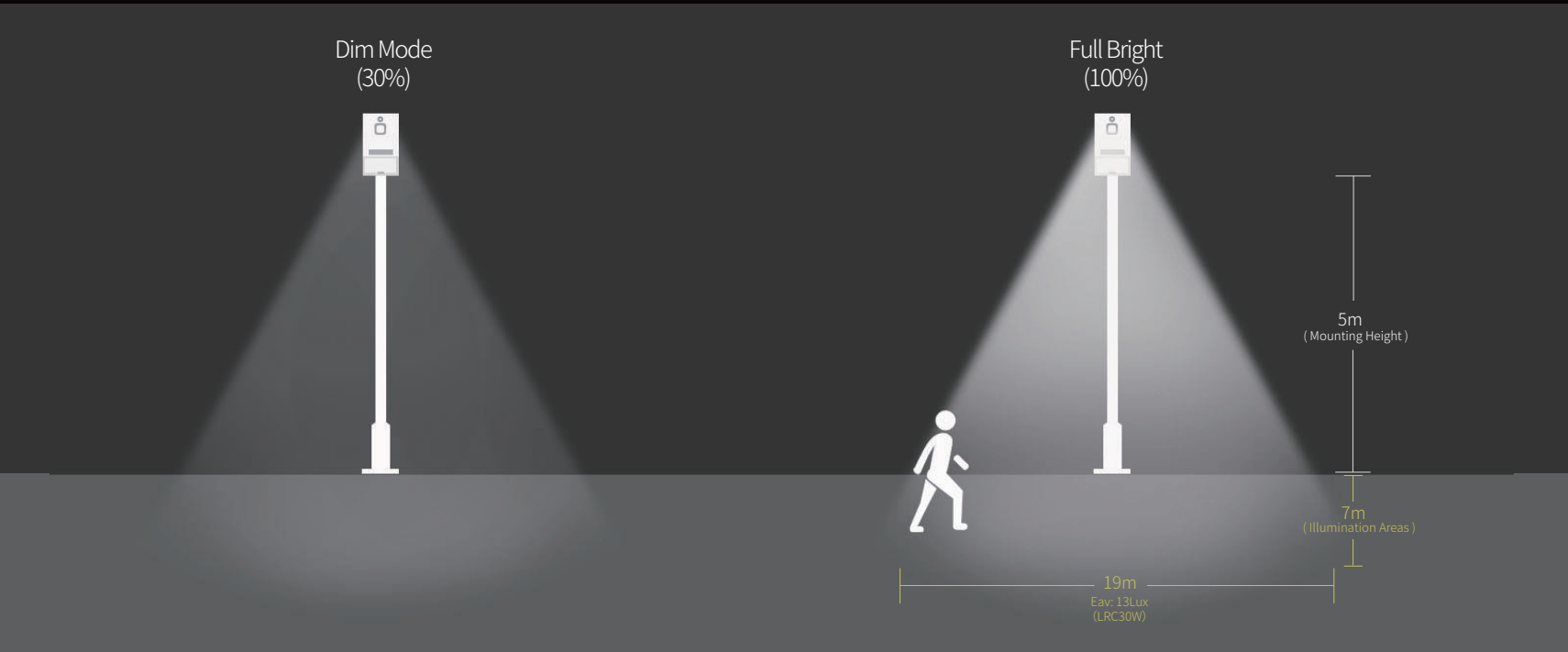
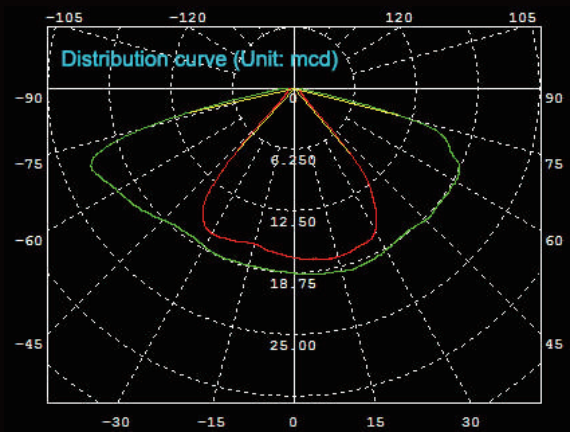


Advanced exhaust valve



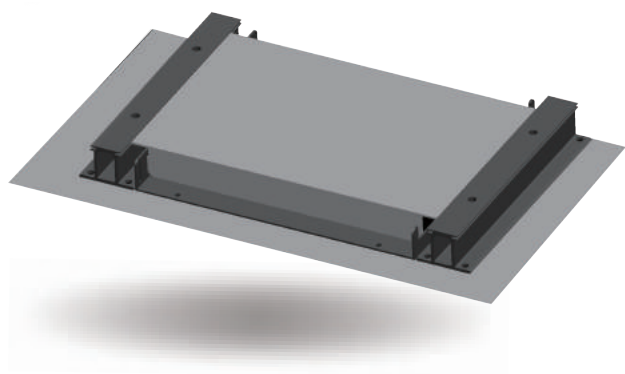
IP67 PG head

Bat wing light distribution curve



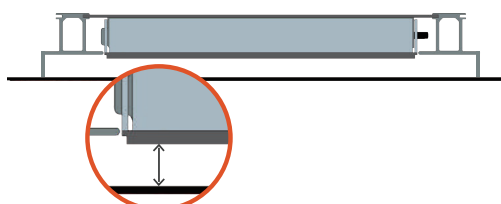
LRC series comes complete with built-in PIR sensor system
Regular automatically the light source from 100% full bright (when people move onto the lamp) to 30% dim mode (when people move away) for energy saving

Model No	Lighting Data Table					
LRC25W	Mounting Height	4M	5M	6M	7M	Recommended Height
	Illumination Area	18*6=108 m ²	18.5*6.5=120.3 m ²	19*7=133 m ²	20*8=160 m ²	5~7M
	Eav (lx)	15Lux	12Lux	10Lux	7Lux	
LRC30W	Mounting Height	4M	5M	6M	7M	Recommended Height
	Illumination Area	18*6=108 m ²	19*7=133 m ²	20*8=160 m ²	22*9=198 m ²	5~7M
	Eav (lx)	17Lux	13Lux	10Lux	8Lux	
LRC40W	Mounting Height	4M	5M	6M	7M	Recommended Height
	Illumination Area	20*8=160 m ²	22*10=220 m ²	24*12=336 m ²	26*13=390 m ²	5~7M
	Eav (lx)	16Lux	13Lux	12Lux	10Lux	

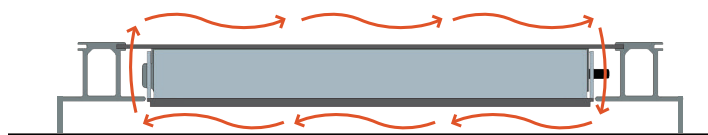


Innovative Battery Protection System

- ◆ Built-in LiFePO4 class A battery, single cell with PTC
- ◆ Superior IC with military standards in battery protection board
- ◆ Waterproof, damp proof, explosion proof
- ◆ Over charging & over discharging protection

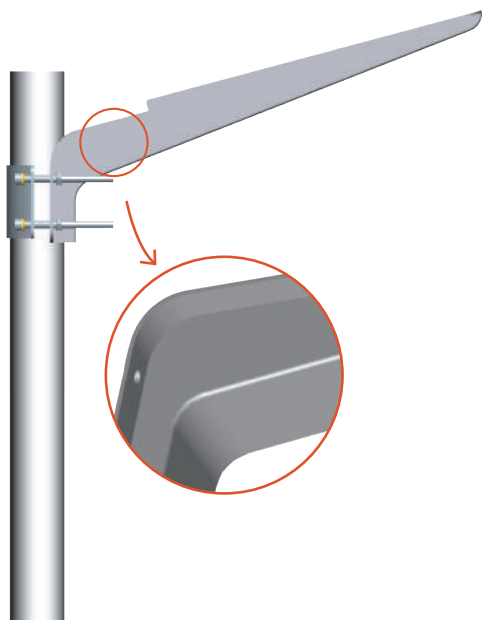


Original separate design with 5mm gap between battery and solar panel



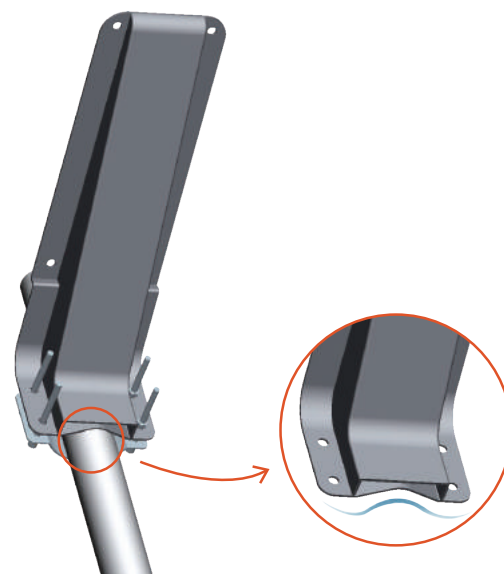
Air convection & thermal system design
More air flows and better heat dissipation

Anti-Typhoon design



Much Stronger

Sectional area is 50% larger than others for thicker materials



Much safer

Patent hooping design with multi-point contact areas, safety increased by 30%

Technical Data

LRC Series All in One Technical Data

* Packaging of 1 unit per carton

Model No.		LRC25W	LRC30W	LRC40W
Physical Parameters				
LED Brand		CREE	CREE	CREE
LED Qty		36	36	36
Power of PV Module (W)		50W	60W	60W
LIFEPO4 Battery Capacity (Ah)		21	25	27
PIR Sensor		✓	✓	✓
Dimension of Product (mm)		1158*281*56	1158*281*56	1158*281*56
Net Weight (kg)		16.5	17	17.5
Dimension of Carton (mm)		1230*350*260	1230*350*260	1230*350*260
Gross Weight (kg)		19	19.5	20
Light Parameters				
Light Output (W)		25W	30W	40W
Typical Luminous Flux (Lm)		3500	4200	5600
Color Temperature (K)		2700-6500	2700-6500	2700-6500
Beam Angle (°)		150°x70°	150°x70°	150°x70°
Min. Working Time (Hours)	Full Bright	13	13	13
	Dim Mode	39	39	39
Environment Parameters				
Charging Temperature (°C)			0 °C to +60 °C	
Discharing temperature (°C)			-20 °C to +60 °C	
Storage temperature (°C)			-20 °C to +45 °C	
Installation				
Recommended Dia. of Top Pole (mm)		76~105	76~105	76~105
Recommended Installation Height (m)		5~7	5~7	5~7
Recommended Installation Distance (m)		18~20	20~25	20~25

להזמנות ופרטים נוספים ניתן לפנות לחברת דרכי האור :

POB 98, Ma'ale Adumim, ISRAEL 9810002

Mobile: 972-50-2500565 | Tel: 972-2-6730822 | Fax: 972-2-6730892

elikom565@gmail.com



WAYS OF LIGHT

שירותים מקצועיים לענף החשמל והתאורה