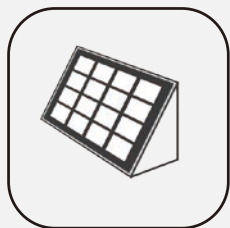




ALL IN ONE

► LRC30W-001GC1

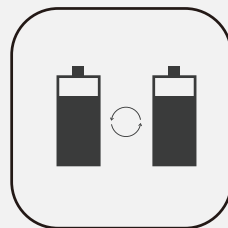
Solar Street Light with CCTV camera



Monocrystalline
Solar Module



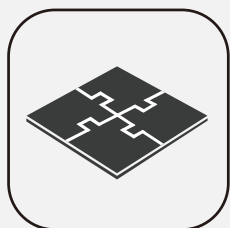
Efficient
Controller



Battery system



CREE LED



All-in-One



Anti-Typhoon



PIR motion Sensor

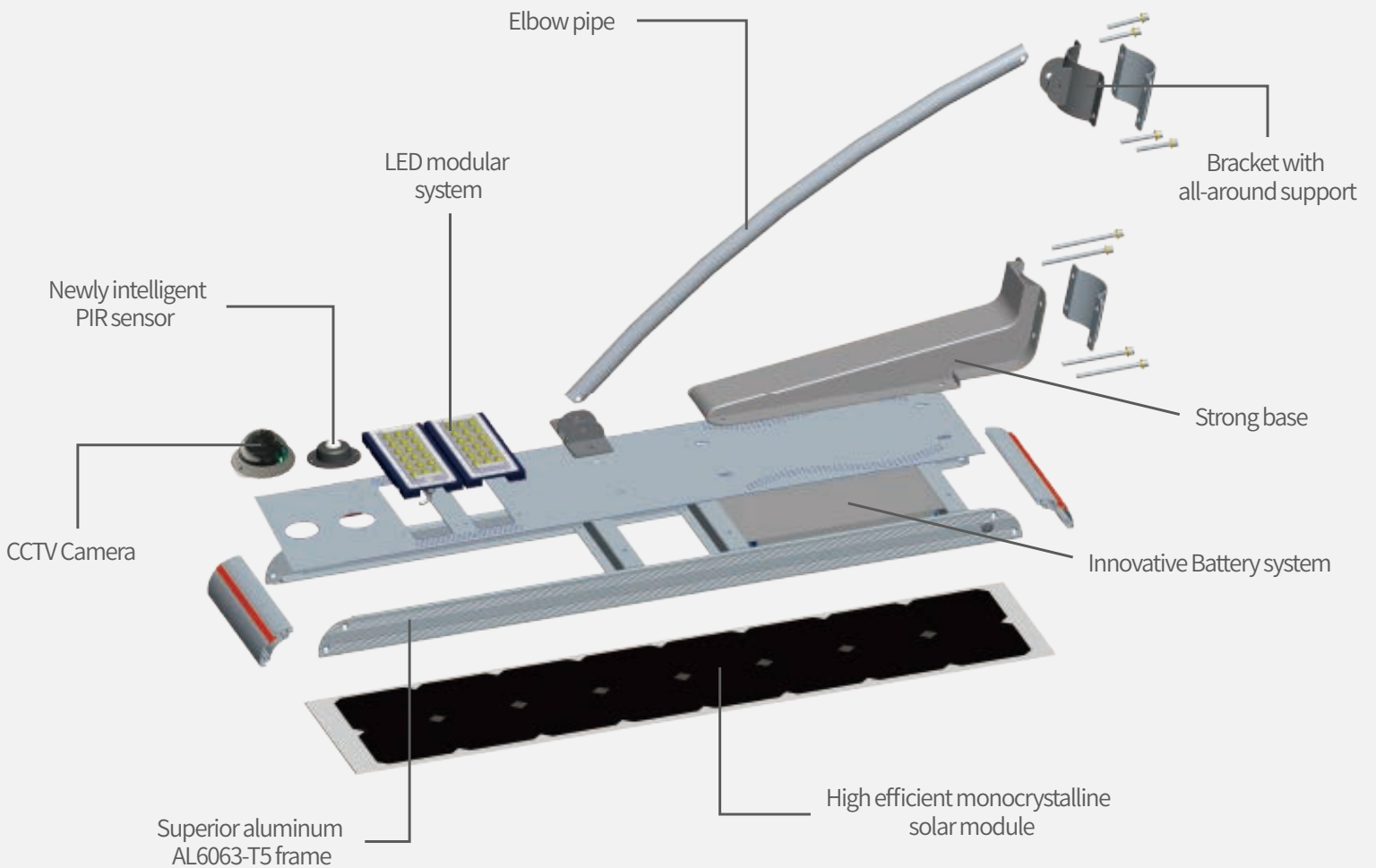


IP65



Patent Design, Globe First
LED Modular Thermal Design
Innovative Battery Protection System
Typhoon Resistant

Simple installation, easy maintenance.
Each part is imaginative,
all materials are carefully selected.
Protected against all weathers.



CCTV CAMERA



Tips

1. Hot plugging is not available for changing SIM card. Please turn off the power.
2. Please don't rotate camera vigorously. Adjust it softly to avoid damaging wire.
3. As for 4G models, please confirm frequency channel for local telecommunication.

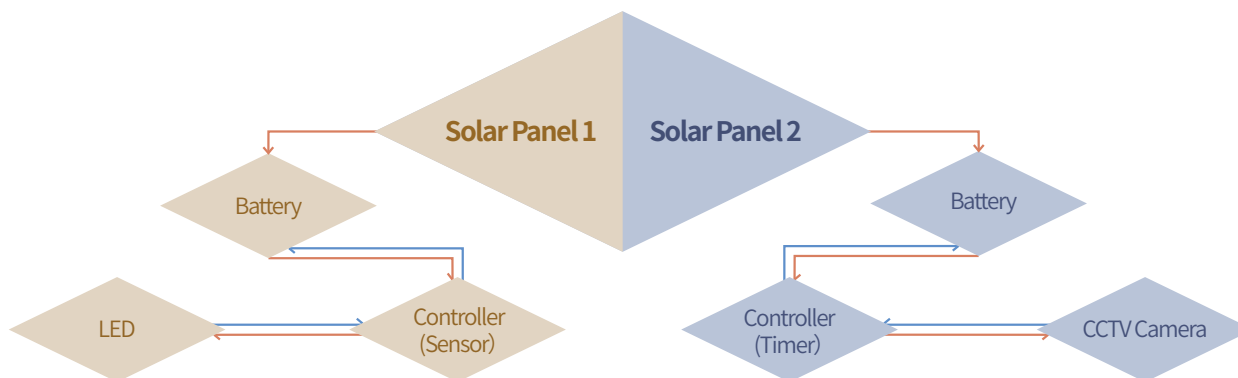
Network function

- ◆ Support mobile phone to see
- ◆ Support 6 users monitor the IP Camera at the same time
- ◆ Built-in WEB SERVER, support IE browse and parameter setting
- ◆ Built-in wifi module

Name	2 Mega Pixel HD Webcam
Pixel	2 Mega Pixel
Monitoring angle	50°
Recommended Monitoring Distance	5-10 meters
Lens Size	6mm(optional)
Resolution	1600*1200
Lens Interface	RJ-45
Day and Night Mode	Shift freely
Minimal luminance	0Lux(IR ON)
Sensitivity	1.0V/Lux-sec(550nm)
SNR	≥48dB
Dual Stream	Support
Interface	WIFI+4G SIM Card
Storage	32G TF card (64G optional)
Safety	Password protection
Power supply	DC12V/2A
Working time	24 hours

Our Advantages

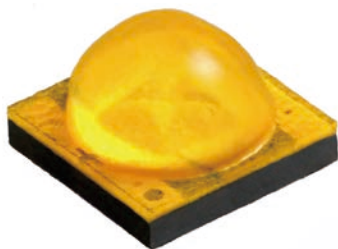
Dual-system Protection Design





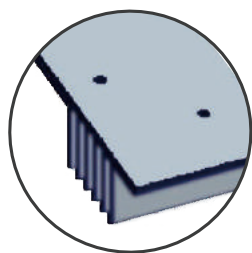
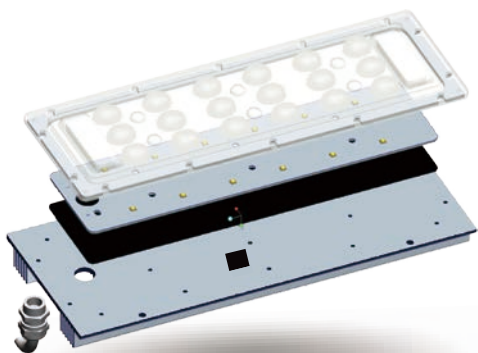
Cree® XLamp® XT-E LEDs

- ◆ CREE LED without gold wire packaging, creates a first-class light source
- ◆ 140Lm/W, 30% brighter than other similar products
- ◆ Longer working hours, 15% longer than other similar products

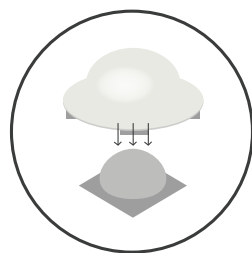


LED Modular System Design

- ◆ Rectangular beam design for road lighting, with bat wing light distribution
- ◆ The well optimized light distribution, made for a more uniform and wider lighting area.
- ◆ Lens with exhaust valve, prevent water vapor gathered & makes longer lifespan
- ◆ Original thermal system design, innovative heat sink with IP67 PG head



Innovative heat sink



Rectangular beam design

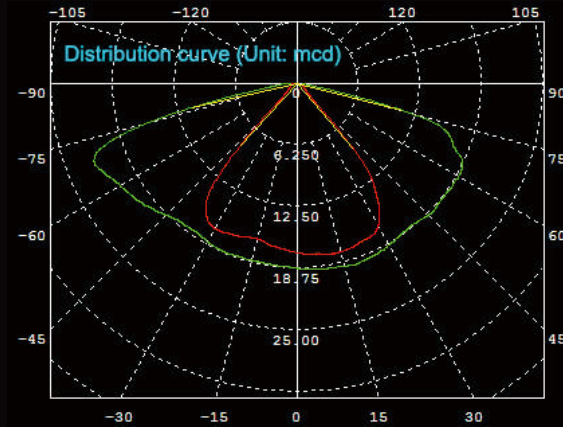


Advanced exhaust valve



IP67 PG head

Bat wing light distribution curve



Dim Mode
(30%)



Full Bright
(100%)



5m
(Mounting Height)

7m
(Illumination Areas)

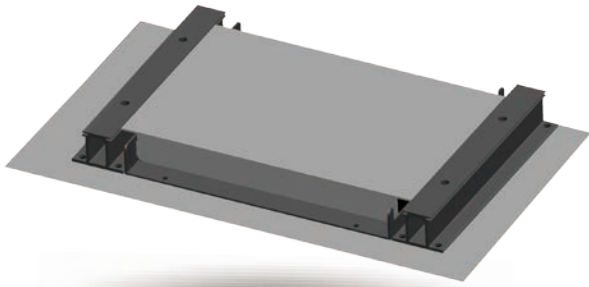
19m
Eav: 13Lux
(LRC30W)

LRC series comes complete with built-in PIR sensor system

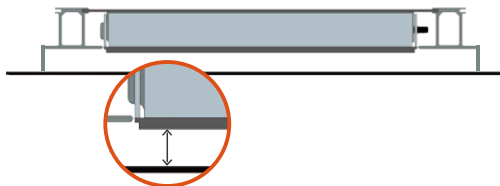
Regular automatically the light source from 100% full bright (when people move onto the lamp) to 30% dim mode (when people move away) for energy saving

Model No	Lighting Data Table					Recommended Height
	Mounting Height	4M	5M	6M	7M	
LRC30W-001GC1	Illumination Area	18*6=108 m ²	19*7=133 m ²	20*8=160 m ²	22*9=198 m ²	5~7M
	Eav (lx)	17Lux	13Lux	10Lux	8Lux	

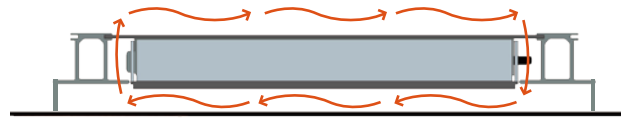
Innovative Battery Protection System



- ◆ Built-in LiFePO4 class A battery, single cell with PTC
- ◆ Superior IC with military standards in battery protection board
- ◆ Waterproof, damp proof, explosion proof
- ◆ Over charging & over discharging protection

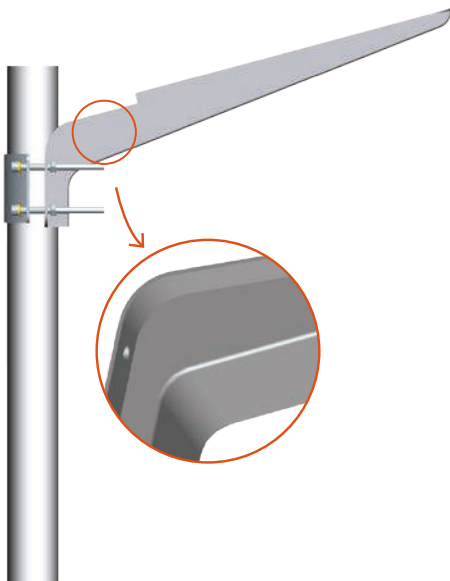


Original separate design with 5mm gap between battery and solar panel



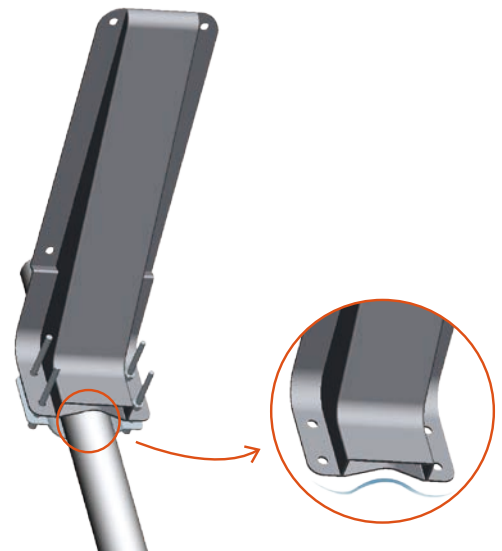
Air convection & thermal system design more air flows and better heat dissipation

Anti-Typhoon design



Much Stronger

Sectional area is 50% larger than others for thicker materials



Much safer

Patent hooping design with multi-point contact areas, safety increased by 30%

Technical Data

LRC Series All in One Technical Data

* Packaging of 1 unit per carton

Model No.		LRC30W-001GC1
Physical Parameters		
LED Brand	CREE	
LED Qty	36	
Power of PV Module (W)	90W	
LIFEPO4 Battery Capacity (Ah)	42	
PIR Sensor	✓	
Dimension of Product (mm)	1158*405*56	
Net Weight (kg)	22	
Dimension of Carton (mm)	1230*480*260	
Gross Weight (kg)	24.8	
Light Parameters		
Light Output (W)	30W	
Typical Luminous Flux (Lm)	4200	
Color Temperature (K)	2700-6500	
Beam Angle (°)	150°x70°	
Min. Working Time (Hours)	Full Bright	13
	Dim Mode	39
Environment Parameters		
Charging Temperature (°C)	0 °C to +60 °C	
Discharging temperature (°C)	-20 °C to +60 °C	
Storage temperature (°C)	-20 °C to +45 °C	
Installation		
Recommended Dia. of Top Pole (mm)	76~105	
Recommended Installation Height (mm)	5~7	
Recommended Installation Distance (mm)	20~25	

להזמנות ופרטים נוספים ניתן לפנות לחברת דרכי האור :

POB 98, Ma'ale Adumim, ISRAEL 9810002

Mobile: 972-50-2500565 | Tel: 972-2-6730822 | Fax: 972-2-6730892

elikom565@gmail.com

